

# MOTORVAC®

## PRODUCT CATALOGUE



MACHINES | CHEMICALS | ADAPTERS



**ISO 9001  
CERTIFIED**

# Table of Contents

MACHINES

Product	Page
CarbonClean 245 .....	1
DieselTune 4000 .....	2
CarbonClean Dual .....	3
CarbonClean System II .....	4
S-Tool Canister .....	4
Cool Smoke EVAP Leak Detection System .....	5
HD TransTech .....	6
TransTech IV .....	7
TransTech III .....	8
TransTech 1000 .....	9
CoolantClean III .....	10
CoolantClean 1000 .....	11
SteerClean 1000 .....	11
OilClean 1000 .....	12
Fluid-Vac 1000 .....	12
BrakeVac II .....	13
CarClean System .....	14

CHEMICALS

Ultrasonic MiST Solution .....	15
MV3 Fuel Detergent .....	16
MV3D Fuel Detergent .....	16
MV4 Fuel Detergent .....	16
TransTech TT2K 2 Part Service Kit .....	17
Universal ATF Protectant .....	17
SteerClean SCK1000 2 Part Service Kit .....	18
OilClean OC2K 2 Part Service Kit .....	18
CoolantClean CC2K 2 Part Service Kit .....	19
Fluid Test Strips & Instant Lubricant Test Pads .....	19
Optional Transmission and Fuel Adapters .....	20





# CarbonClean 245



## Complete Fuel System Service and Diagnostic Center

### Part No. 500-0245

MotorVac's two-line cleaning system connects to the engine using vehicle specific adapters, temporarily replacing the vehicle's fuel system. During the first cleaning phase (with the engine off) the system circulates MotorVac's powerful yet safe proprietary cleaning MV3 detergent mixed with gasoline through the components of the engine's fuel system. This phase safely dissolves contaminants, gum and varnish deposits, capturing them in the unit's ten micron filter. The air intake plenum, throttle body and intake runners are cleaned utilizing the ICS kit in conjunction with the foaming MV4 detergent. During the second cleaning phase (engine running), the injector screens, intake & exhaust valves, top of pistons, combustion chamber, oxygen sensor, and catalytic converter are cleaned. This safely dissolves and removes most of the soft carbon deposits, passing them harmlessly out with the exhaust.

- Fully Electronic-Microprocessor Controlled Operation.
- Vehicle specific, industrial grade adapters/hoses.
- Pressure loss warning light and alarm, automatic shut-off.
- Purge cycle vacuums excess fuel from pressure line to avoid spills.
- System can run unattended.

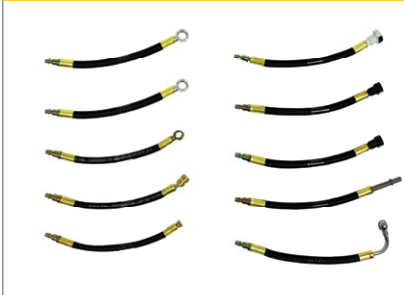
CARBONCLEAN 245

RECOMMENDED CHEMICALS MV3 Part No. 400-0020  
MV4 Part No. 400-0030

#### PART NO. 200-3025A STANDARD ADAPTERS (INCLUDED)



#### PART NO. 200-3026A DELUXE ADAPTERS (INCLUDED)



#### PART NO. 200-8667 ICS KIT (INCLUDED)



PART NO.	QTY	DESCRIPTION
060-1000	2	1/4" Fuel Line - Male - General Application
060-1100	2	5/16" Fuel Line - Male - General Application
060-1200	2	3/8" Fuel Line - Male - General Application
060-1300	2	1/4" Fuel Line - Female - General Application
060-1400	2	5/16" Fuel Line - Female - General Application
060-1500	2	3/8" Fuel Line - Female - General Application
060-1700	1	Carbureted Vehicles With 5/16" Flare Fuel Inlets
060-1800	1	Carbureted and Early Fuel Injected Vehicles With 3/8" Flare Fuel Inlets
060-2501	1	Forms "Tank to Tank" Loop On All Vehicles
060-2800	1	1/4" Male - Late Model Vehicles TBI And/Or Port Fuel
060-3100	1	TBI And/Or Port Fuel Pressure Line - Male

060-3105	1	TBI And/Or Port Fuel Pressure Line - Female M16 x 1.5
060-3300	1	TBI And/Or Port Fuel return Line - Male M14 x 1.5
060-3305	1	TBI And/Or Port Fuel return Line - Female M14 x 1.5
060-3500	1	3/8" Male Spring Lock With Clip - Port Fuel-Return Line
060-3505	1	3/8" Female Spring Lock - Port Fuel-Return Line
060-3600	1	1/2" Male Spring Lock With Clip
060-3605	1	1/2" Female Spring Lock
060-3901	1	3/8" Quick Disconnect - Port Fuel and TBI
060-4200	1	5/16" Male TBI And/Or Port Fuel
060-4300	1	3/8" TBI And/Or Port Fuel
060-3902	1	1/4" Female TBI And/Or Port Fuel
060-4501	1	Tee Adapter For Single Line Fuel Injection Systems

060-1600	1	12mm Banjo Fitting CIS Or EFI Systems
060-1602	1	12mm 90 Degree Banjo Fitting CIS Or EFI Systems
060-2402	2	14mm Banjo Fitting Pressure Line
060-3508	1	"Test Port/Schrader Valve" Connection FORD
060-3700	1	"Test Port/Schrader Valve" Connection GM
060-3900	2	5/16" Quick Disconnect - Port Fuel And TBI
060-3901	1	3/8" Quick Disconnect - Port Fuel And TBI
060-4300	1	3/8" TBI And/Or Port Fuel

#### Specifications

Power Cord	10' (3 m)	Shipping Height	41" (104 cm)
Power Supply	12 volt DC	Shipping Width	24" (61 cm)
New Fluid Capacity	5 Quarts (4.73L)	Shipping Depth	19" (48 cm)



DIESELTUNE 4000



**OEM Approved**

# DieselTune 4000

**Complete Diesel System Service**

## Part No. 500-4006

The DieselTune is a 2-line cleaning system that connects to the engine through OEM specific adapters. The IDT 4000 passes a concentrated mixture of MotorVac cleaning detergent and diesel fuel through the components of the fuel system while the engine is running. The system removes organic and inorganic fuel deposits that build up in fuel injectors, injection pumps and combustion chambers. Carbon, gum and varnish deposits in the entire upper engine are dissolved and removed during combustion, then passed through the exhaust.

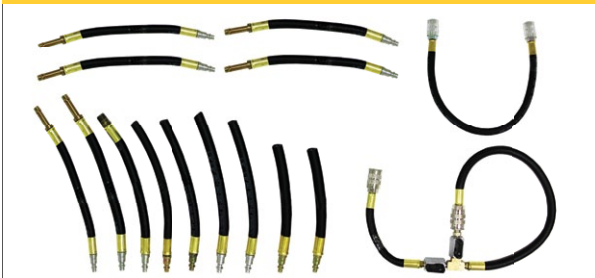
- Safe for use in all diesel engines, including heavy-duty truck applications.
- Patented microprocessor for ease of use.
- Lowers exhaust opacity and harmful emissions.
- Automatically maintains correct pressure and flow for worry-free operation.
- Exclusive soak mode for deep cleaning of the fuel delivery system.
- Restores fuel economy and horsepower.
- Extends fuel injector and fuel pump life.

### Specifications

Power Cord	10' (3 m)	Shipping Height	41" (104 cm)
Power Supply	12 volt DC	Shipping Width	24" (61 cm)
New Fluid Capacity	4.6 Gal. (17.41L)	Shipping Depth	19" (48 cm)

### RECOMMENDED CHEMICAL MV3D Part No. 400-0010

#### PART NO. 200-3021A STANDARD ADAPTERS (INCLUDED)



PART NO.	QTY	DESCRIPTION
060-1000	2	General Applications - Utilizing 1/4" Male Fuel Line
060-1100	2	General Applications - Utilizing 5/16" Male Fuel Line
060-1200	2	General Applications - Utilizing 3/8" Male Fuel Line
060-1300	2	General Applications - Utilizing 1/4" Female Fuel Line
060-1400	2	General Applications - Utilizing 5/16" Female Fuel Line
060-1500	2	General Applications - Utilizing 3/8" Female Fuel Line
060-3200	1	1/4" Male NPT, FORD TBI
060-4501	1	Tee Adapter For Single Line Fuel Injection System
060-2501	1	Forms "Tank to Tank" Loop On All Vehicles

#### PART NO. 200-3117 LIGHT TRUCK ADAPTERS (INCLUDED)



PART NO.	QTY	DESCRIPTION
060-3100	1	Pressure Line - Male GM M16 x 1.5
060-3105	1	Pressure Line - Female GM M16 x 1.5
060-3300	1	Return Line - Male GM M14 x 1.5
060-3305	1	Return Line - Female GM M14 x 1.5
060-3500	1	3/8" Male Spring Lock With Clip
060-3505	1	3/8" Female Spring Lock With Clip
060-3600	1	1/2" Male Spring Lock With Clip
060-3605	1	1/2" Female Spring Lock
060-3900	2	5/16" Quick Disconnect
060-4200	2	5/16" Male Dodge Cummins
060-4300	2	3/8" Male Dodge Cummins
060-3901	2	3/8" Female Dodge Cummins
062-2040	1	1/2" Male Tube With Locking Quick Disconnect
061-1550	1	1/2" Open End Hose





# CarbonClean Dual

**Complete Fuel System Service  
for both Gasoline and Diesel Engines**

**Part No. 500-0352**

The MCS 352 services both gasoline and diesel engines to clean the entire fuel system. When used with fuel system cleaning detergents and the Intake Cleaning Kit, the MCS 352 system cleans the gasoline engine's air plenum, throttle body, air bypass valve, injectors, valves, combustion chambers, oxygen sensor and catalytic converters without having to remove any engine components. When used with diesel detergent, the MCS 352 system cleans the diesel fuel injectors, injector pump and combustion chambers.

- Works on port-fuel, TBI, CIS, and carbureted systems.
- Safely dissolves contaminants, gum and varnish deposits, capturing them in the built-in 10 micron filter.
- Cleans injector screens, intake & exhaust valves, top of pistons, combustion chamber, oxygen sensor and catalytic converter.
- Safely dissolves and removes soft carbon deposits and passes them through the exhaust.



**OEM Approved**

### Specifications

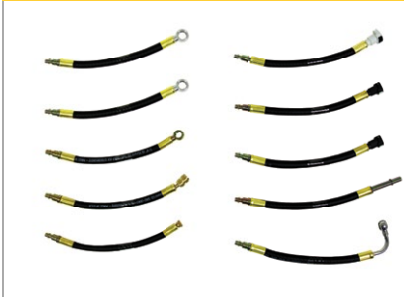
Power Cord	9' (2.7 m)	Shipping Height	41" (104 cm)
Power Supply	12 volt DC	Shipping Width	24" (61 cm)
New Fluid Capacity	x 2 (2L)	Shipping Depth	19" (48 cm)

**RECOMMENDED CHEMICALS** MV3 Part No. 400-0020  
MV4 Part No. 400-0030  
MV3D Part No. 400-0010

#### PART NO. 200-3025A STANDARD ADAPTERS (INCLUDED)



#### PART NO. 200-3026A DELUXE ADAPTERS (INCLUDED)



#### PART NO. 200-8667 ICS KIT (INCLUDED)



PART NO.	QTY	DESCRIPTION
060-1000	2	1/4" Fuel Line - Male - General Application
060-1100	2	5/16" Fuel Line - Male - General Application
060-1200	2	3/8" Fuel Line - Male - General Application
060-1300	2	1/4" Fuel Line - Female - General Application
060-1400	2	5/16" Fuel Line - Female - General Application
060-1500	2	3/8" Fuel Line - Female - General Application
060-1700	1	Carbureted Vehicles With 5/16" Flare Fuel Inlets
060-1800	1	Carbureted and Early Fuel Injected Vehicles With 3/8" Flare Fuel Inlets
060-2501	1	Forms "Tank to Tank" Loop On All Vehicles
060-2800	1	1/4" Male - Late Model Vehicles TBI And/Or Port Fuel
060-3100	1	TBI And/Or Port Fuel Pressure Line - Male

060-3105	1	TBI And/Or Port Fuel Pressure Line - Female M16 x 1.5
060-3300	1	TBI And/Or Port Fuel return Line - Male M14 x 1.5
060-3305	1	TBI And/Or Port Fuel return Line - Female M14 x 1.5
060-3500	1	3/8" Male Spring Lock With Clip - Port Fuel-Return Line
060-3505	1	3/8" Female Spring Lock - Port Fuel-Return Line
060-3600	1	1/2" Male Spring Lock With Clip
060-3605	1	1/2" Female Spring Lock
060-3901	1	3/8" Quick Disconnect - Port Fuel and TBI
060-4200	1	5/16" Male TBI And/Or Port Fuel
060-4300	1	3/8" TBI And/Or Port Fuel
060-3902	1	1/4" Female TBI And/Or Port Fuel
060-4501	1	Tee Adapter For Single Line Fuel Injection Systems

060-1600	1	12mm Banjo Fitting CIS Or EFI Systems
060-1602	1	12mm 90 Degree Banjo Fitting CIS Or EFI Systems
060-2402	2	14mm Banjo Fitting Pressure Line
060-3508	1	"Test Port/Schrader Valve" Connection FORD
060-3700	1	"Test Port/Schrader Valve" Connection GM
060-3900	2	5/16" Quick Disconnect - Port Fuel And TBI
060-3901	1	3/8" Quick Disconnect - Port Fuel And TBI
060-4300	1	3/8" TBI And/Or Port Fuel



CARBONCLEAN 1000



# CarbonClean 1000

## Fuel System Cleaning and Decarbonizing Service

### Part No. 500-0220

The CarbonClean 1000 is a fuel system cleaning and engine decarbonizing service that combines the powerful results of a through-rail connection with the ease of use that draws users to the other methods.

### Features and Benefits

- Single line, one step operation. Closed system with pre mixed chemicals allows for minimal setup and fast services.
- Online application guide that covers 1987 to current model year vehicles provides step by step instructions on how to connect to thousands of vehicles. Because it's online, it's always current.
- Complete set of adapters is included for fast and easy hook up. A unique manifold block assembly makes connecting to the fuel rail a simple and painless procedure.
- Diagnostic capabilities. Fuel pressure leak down detects if fuel pump/regulator or injector is leaking. Fuel volume test allows verifying if pump and filter are performing adequately.
- 12 volt DC operation and heavy duty, portable housing provides rugged utility that canister type systems cannot match.
- System can run unattended. An alarm buzzer tells you when the service is complete, so the vehicle can be turned off without setting "check engine" codes

### Specifications

Power Cord - 4.9 m (16ft)	Ship Height - 41" (104 cm.)
Power Supply - 12 Volt DC Operation	Ship Width - 24" (61 cm)
Hose - 3 m (10 ft.) Output	Ship Depth - 19" (48 cm)
Fuel Pressure Gauge - Vehicle and System	Cabinet - Rotomolded
Ship Weight - 20 lbs (8.6 Kg.)	One year warranty

**RECOMMENDED CHEMICAL MV5 Part No. 400-0050**

### ADAPTERS



PART NO.	QTY	DESCRIPTION
063-1311	1	Spring lock disconnect tool
063-1360	1	Manifold block assembly
063-1361	1	Adapter 7/16" female thread 90
063-1362	1	Adapter 5/16" female thread 90
063-1364	1	Adapter 5/16" & 3/8" hose barb
063-1366	1	Adapter 5/16" female thread straight
063-1367	1	Adapter 7/16" female thread straight
063-1368	1	Adapter 8mm mqdc en plated
063-1369	1	Adapter 10mm mqdc en plated
063-1370	1	Adapter 10 mm qdc female
063-1371	1	Adapter ford 9/16 qdc male
063-1372	1	Adapter ford 9/16 qdc female

# Cool Smoke

## EVAP Leak Detection System



COOL SMOKE EVAP



### Part No. 500-0100

The Cool Smoke EVAP Leak Detection System quickly locates leaks smaller than 0.010". Unlike other smoke machines, Cool Smoke uses no heat or electrical energy to generate its high performance ultraviolet enriched vapor. Also, it does not require nitrogen or other inert gases to protect a heating element from contacting evaporated gasoline fumes from the EVAP System.

Cool Smoke is equally effective at finding vacuum leaks, EGR leaks, exhaust leaks, HVAC control leaks and any other leak encountered on today's vehicles.

The machine includes all required adapters to effectively plug various openings to contain the smoke, as well as its own EVAP port adapter.

- New safer, healthier technology. Uses no heat to create high visibility smoke.
- Using 0.5psi pressure control, Cool Smoke has the highest flow rate of any smoke machine.
- Instant, high performance vapor enriched with UV dye.
- Ready for future EVAP Systems.
- Rugged housing and built-in adapter storage.
- Uses 12 volt DC with only 1 amp draw rate.

### STANDARD ADAPTERS (INCLUDED)



PART NO.	QTY	DESCRIPTION
060-0005	1	Service Port Adapter (Standard)
060-0008	1	Shrader Core Remover
200-3110	15	Cap Plug Kit
200-8687	1	Exhaust Cone Assembly

### Specifications

Vapor Hose	12' (3.67m)	Shipping Height	16.5" (42 cm)
Power Supply	12 volt DC	Shipping Width	19" (48 cm)
Vapor Container	Refillable	Shipping Depth	14" (35 cm)





# HD TransTech

Transmission Fluid Exchange System for Heavy Duty Applications



Specifications	
Power Supply	12 or 24 volt DC
Shipping Height	39.5" (100 cm)
Shipping Width	39" (99 cm)
Shipping Depth	20" (51 cm)

**RECOMMENDED CHEMICALS**  
TT2K Part No. 400-0137

## Part No. 500-1150

The HD TransTech is the first machine designed to exchange virtually all of the used transmission fluid in a heavy duty transmission. This turn-key transmission service system is easy to use for trucks, buses and similar vehicles. The convenient Drain Pan function allows for a spill free transmission filter change. The HD TransTech connects through the transmission cooler lines and provides a clean, environmentally friendly approach to servicing transmissions.

- Computerized ATF flow synchronization maintains a 1-to-1 ratio exchange.
- "Drain Pan" function for transmission filter changes during exchange.
- Portable: Unit is powered by a 12 or 24 volt battery so you can use it anywhere.
- Efficient: Service can be safely performed unattended to allow other work to be performed.
- High volume pumps and two 15' hoses for new and used ATF.
- Two separate 72 Quart (68 liter) Clean and Waste fluid reservoirs.
- Adapters included for most Allison & some ZF transmissions.

## PART NO. 200-3107 & 200-8100 STANDARD ADAPTERS (INCLUDED)



PART NO.	QTY	DESCRIPTION
064-4008	1	#8 JIC Female Cooler Line
064-4010	1	#10 JIC Female Cooler Line
064-4012	2	#12 JIC Female Cooler Line
200-8100	1	HD Direction Flow Adapter





# TransTech IV

## Inline & Dipstick Automatic Transmission Fluid Exchange System

### Part No. 500-1125

The TransTech IV combines both Inline and Dipstick capabilities allowing for the two most common methods of ATF exchange from a single machine. With both Inline and Dipstick services together in one cabinet, the TransTech IV occupies reduced floor space with minimal investment while providing service to a wider variety of vehicles.

**Inline Exchange** – This conventional ATF exchange method provides an effective transmission flush by connecting directly to the transmission cooler lines. New fluid flows through the transmission as old fluid is directed into the TransTech IV waste tank in a 1 to 1 ratio.

**Dipstick Exchange** - The TransTech IV features a convenient Dipstick option that allows an effective ATF exchange through the transmission dipstick tube. This useful alternative is suitable when cooler lines are corroded or difficult to access.

- Automatic Inline Exchange - Connect to a transmission cooler line and press one button. Walk away until the service is complete.
- Dipstick Exchange - A convenient dipstick tube exchange requiring no tools or adapters.
- Drain Pan Feature - Allows operator to drain transmission pan for a convenient and mess-free filter change.
- Transmission Cooler Flush Feature - Allows operator to flush transmission cooler and cooler lines.
- Patented Level Synchronization - Ensures the transmission cannot be under or overfilled.
- Automatic Bypass - Ensures that transmission will not run out of fluid during the exchange process.
- 26 Quart (24.6 L) New Fluid Reservoir - Allows user to service large capacity transmissions.
- High Volume Pump - For rapid and efficient service.

RECOMMENDED CHEMICALS TT2K Part No. 400-0137

#### PART NO. 200-3100A STANDARD ADAPTERS (INCLUDED)



PART NO.	QTY	DESCRIPTION
060-1000	1	1/4" Male Bump Tube - Most Asian Vehicles
060-1100	1	5/16" Male Bump Tube - Most Asian Vehicles
060-1200	1	3/8" Male Bump Tube - Most Asian Vehicles
060-1300	1	1/4" Open End Hose - Most Asian Vehicles
060-1400	1	5/16" Open End Hose - Most Asian Vehicles
060-1500	1	3/8" Open End Hose - Most Asian Vehicles
060-1700	1	5/16" Flare, 7/16" - 24 - Domestic Vehicles
060-1800	1	3/8" Flare, 5/8" - 20 - Domestic Vehicles
060-3800	1	#5 SAE Flare - European Vehicles
062-0100	1	5/16" Male Flare-Deep Ford Vehicles
062-0120	1	3/8" Male Flare-Deep - Ford Vehicles
062-1034	1	3/8" Female Flare-Deep - Ford Vehicles
200-8099	1	Direction Flow Adapter
200-3102	1	Dipstick Tube Adapter Kit - Set Of 2

#### PART NO. 200-3101A DELUXE ADAPTERS (INCLUDED)



PART NO.	QTY	DESCRIPTION
060-4200	1	5/16" Male Tube With Locking Quick Connect
060-4300	1	3/8" Male Tube With Locking Quick Connect
061-1550	1	1/2" Open End Hose
062-2040	1	1/2" Male Tube With Locking Quick Connect
062-2066	1	3/8" Male Tube With Locking Quick Connect
060-2402	2	14mm x 1.5 Banjo
060-2600	1	16mm x 1.5 Bubble Flare European Vehicles
062-4401	1	3/8" Double Bump - Ford

#### Specifications

Item	Value	Shipping Dimension	Value
Power Cord	10' (3 m)	Shipping Height	41" (104 cm)
Power Supply	12 volt DC	Shipping Width	24" (61 cm)
New Fluid Capacity	26 Quart (24.6L)	Shipping Depth	19" (48 cm)



TRANSTECH IV



TRANSTECH III



# TransTech III

## Transmission Fluid Exchange System

### Part No. 500-1100

The TransTech III's advanced electronic interface allows complete, "one touch" control. It even has a quick and easy "Drain Pan" function for spill free transmission filter changes during ATF exchange. The TransTech III connects through transmission cooler lines and provides a clean, environmentally-friendly and systematic approach to servicing automatic transmissions. The unit will flush virtually all of the old transmission fluid and replace it with the new fluid while controlling the flow automatically with the engine running.

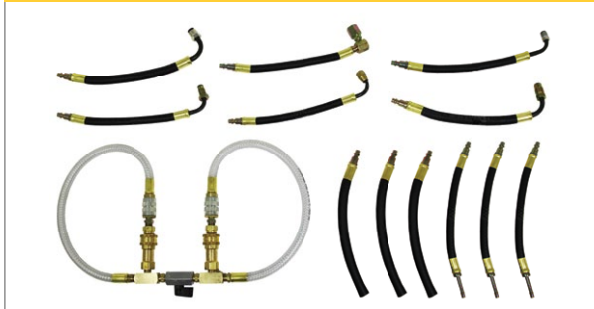
- Automatic Inline Exchange - Connect to a transmission cooler line and press one button. Walk away until the service is complete.
- Drain Pan Feature - Allows operator to drain transmission pan for a convenient and mess-free filter change.
- Transmission Cooler Flush Feature - Allows operator to flush transmission cooler and cooler lines.
- Patented Level Synchronization - Ensures the transmission cannot be under or overfilled.
- Automatic Bypass - Ensures that transmission will not run out of fluid during the exchange process.

#### Specifications

Power Cord	10' (3 m)	Shipping Height	41" (104 cm)
Power Supply	12 volt DC	Shipping Width	24" (61 cm)
New Fluid Capacity	26 Quart (24.6L)	Shipping Depth	19" (48 cm)

#### RECOMMENDED CHEMICALS TT2K Part No. 400-0137

#### PART NO. 200-3100A STANDARD ADAPTERS (INCLUDED)



PART NO.	QTY	DESCRIPTION
060-1000	1	1/4" Male Bump Tube - Most Asian Vehicles
060-1100	1	5/16" Male Bump Tube - Most Asian Vehicles
060-1200	1	3/8" Male Bump Tube - Most Asian Vehicles
060-1300	1	1/4" Open End Hose - Most Asian Vehicles
060-1400	1	5/16" Open End Hose - Most Asian Vehicles
060-1500	1	3/8" Open End Hose - Most Asian Vehicles
060-1700	1	5/16" Flare, 7/16" - 24 - Domestic Vehicles
060-1800	1	3/8" Flare, 5/8" - 20 - Domestic Vehicles
060-3800	1	#5 SAE Flare - European Vehicles
062-0100	1	5/16" Male Flare-Deep Ford Vehicles
062-0120	1	3/8" Male Flare-Deep - Ford Vehicles
062-1034	1	3/8" Female Flare-Deep - Ford Vehicles
200-8099	1	Direction Flow Adapter

#### PART NO. 200-3101A DELUXE ADAPTERS (INCLUDED)



PART NO.	QTY	DESCRIPTION
060-4200	1	5/16" Male Tube With Locking Quick Connect
060-4300	1	3/8" Male Tube With Locking Quick Connect
061-1550	1	1/2" Open End Hose
062-2040	1	1/2" Male Tube With Locking Quick Connect
062-2066	1	3/8" Male Tube With Locking Quick Connect
060-2402	2	14mm x 1.5 Banjo
060-2600	1	16mm x 1.5 Bubble Flare European Vehicles
062-4401	1	3/8" Double Bump - Ford



# TransTech 1000

## Dipstick Transmission Fluid Exchange System

Part No. 500-1101

The TransTech 1000 performs a fast and effective transmission fluid exchange through the vehicle's ATF dipstick. TransTech 1000 Transmission Service System can increase a shop's profits by minimizing the time it takes to perform a fluid exchange in just a few minutes. The TransTech 1000 is easy to use and is compatible with most foreign and domestic vehicles.

- Connects through the dipstick and provides a fast and efficient approach to servicing automatic transmissions.
- Dipstick application provides ability to service most foreign and domestic vehicles.
- High volume fluid pump allows for quick extraction.
- 26-quart (24.6L) reservoir for large capacity transmissions.

### Specifications

Power Cord	15' (4.5m)	Shipping Height	41" (104 cm)
Power Supply	12 volt DC	Shipping Width	24" (61 cm)
New Fluid Capacity	26 Quart (24.6L)	Shipping Depth	19" (48 cm)

RECOMMENDED CHEMICALS TT2K Part No. 400-0137




# Universal ATF Protectant

By using MotorVac Universal ATF Protectant, a full service facility can service virtually all vehicles by stocking only synthetic Dexron III and Dexron VI. No need to stock expensive OEM fluids that tie up money and space. As well, Universal ATF Protectant increases transmission life and improves performance.

- Eliminates the need to stock multiple ATF types.
- Prolongs transmission life by reducing excessive heat and friction.
- Ensures smoother shifting and eliminates transmission shudder.
- Conditions and restores seals and O-rings to help eliminate leaks.

Part No. 400-1030as

Universal ATF Protectant  
12 x 10oz (296ml) Bottles



\* Application guide available upon request.  
Part No. ZMM10-00194

Make/Model	Year	Engine	litre	Transaxle	Trans Fill Qty.
<b>FORD (continued)</b>					
Excursion	90-90	L4	1.6, 1.9, 2.0L	4EAT-F	6.7/6.3
	97-02	L4	1.8, 1.9, 2.0L	4EAT-F	5.7/5.4
Festiva	90-93	L4	1.6L	JATCO F3A	6.9/6.6
Focus	00-03	L4	2.0L	4F27E	6.9/6.6
	04-05	L4	2.0L	4F27E	6.9/6.6
	06-07	L4	2.0L	4F27E	7.1/6.7
	08	L4	2.0L	4F27E	6.9/6.6
Freestar	03-05	V6	3.9, 4.2L	CVT	N/A
	04-07	V6	3.9, 4.2L	AX4N	13.7/13
	06-07	V6	3.8, 3.9, 4.2L	AX4N	12.3/11.6
Freestyle	05-07	V6	3.0L	CVT	10.9/5
	05-07	V6	3.0L	AF21-R	7.4/7.0
Fusion	05-08	L4	2.3L	SNSR	9.9/9.4
	05-08	V6	3.0L	AWGA-EL	7.4/7



TRANSTECH 1000





COOLANTCLEAN III



# CoolantClean III

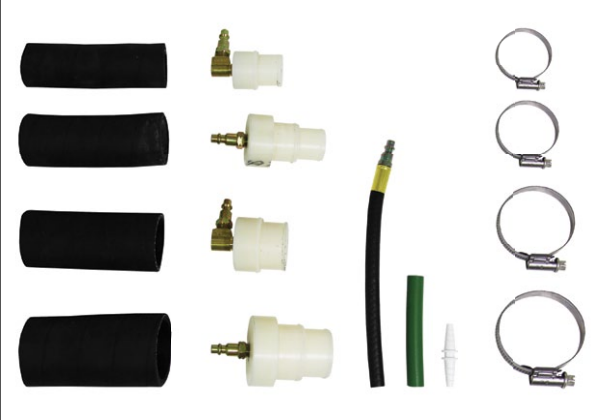
## Premium Coolant Flush System

### Part No. 500-5100

The CoolantClean III exchanges virtually all of the used coolant mixture in a vehicle's cooling system in a few simple steps. The CoolantClean III coolant flush service can increase a shop's profits by reducing the time it takes to do a complete fluid exchange to approximately 15 minutes. Simply by connecting to the vehicle's upper radiator hose, the unit will flush virtually all of the old coolant and replace it with the new coolant.

- Static or dynamic fluid exchange.
- One switch, multi-function operation with "closed loop" mode at end of service.
- Unique "vacuum switch" regulates system depressurization and fluid evacuation.
- Complete flow synchronization maintains a 1-to-1 fluid ratio exchange.
- Front panel controls all machine functions with pressure gauge and warning lights.
- Industrial grade radiator hoses & adapters included to service most vehicles.
- Dual pump operation.
- Pressure is limited to 10 psi – if cap malfunctions, fluid will overflow into reservoir.

### PART NO. 200-3106 STANDARD ADAPTERS (INCLUDED)



PART NO.	QTY	DESCRIPTION
063-1030	1	Stepped Hose - 1 1/4" x 1 1/2" OD
063-1031	1	Plug Adapter 1 1/4" x 1 1/2" OD
063-1032	1	Stepped Hose Adapter - 1 3/4" x 2" OD
063-1033	1	Plug Adapter 1 3/4" x 2" OD
080-6005	2	Hose Clamp # 28
010-5408	2	Hose Clamp # 36
060-1400	1	5/16" Open End Adapter
030-4404	1	1/4" x 3/8" Union Step Cone
070-0120	1	3/8" ID x 4" IG Rubber Hose
070-0126	1	1 1/4" ID x 4" IG Rubber Hose
070-0127	1	1 1/2" ID x 4" IG Rubber Hose
070-0128	1	1 3/4" ID x 4" IG Rubber Hose
070-0129	1	2" ID x 4" IG Rubber Hose

### Specifications

Power Cord	10' (3m)	Shipping Height	41" (104 cm)
Power Supply	12 volt DC	Shipping Width	24" (61 cm)
New Fluid Capacity	26 Quart (24.6L)	Shipping Depth	19" (48 cm)

RECOMMENDED CHEMICALS CC2K Part No. 400-0138





# CoolantClean 1000

## Vacuum Coolant Flush



COOLANTCLEAN 1000

### Part No. 500-5150

The CoolantClean 1000 exchanges coolant directly from the radiator and allows a basic service to be performed in minutes. The machine is easy to use and does not require disconnecting any hoses or time-consuming hook-ups to the cooling system.

- Performs a simple and safe coolant exchange service in just minutes.
- Easy to use valves for optimal flow control.
- Air powered pump will pull 24 inches of vacuum.
- Connects through the radiator cap in minutes.

#### Specifications

Hose	8' (2.43m)	Shipping Height	41" (104 cm)
Power Supply	Air Power Supply	Shipping Width	24" (61 cm)
New Fluid Capacity	26 Quart (24.6L)	Shipping Depth	19" (48 cm)

RECOMMENDED CHEMICALS CC2K Part No. 400-0138

#### STANDARD ADAPTERS (INCLUDED)



PART NO.	QTY	DESCRIPTION
060-1400	1	5/16" Open End Adapter
063-1035	1	"CONE" Adapter
063-1036	1	"FILL" Adapter



# SteerClean 1000

## Power Steering Fluid Exchange System



STEERCLEAN 1000

### Part No. 500-7050

The SteerClean 1000 exchanges virtually all of a vehicle's power steering fluid in just five minutes with a few simple steps. Friction and heat in the power steering system causes oxidation that breaks down the fluid and its lubricating ability. This can accelerate wear in the pump, valves and gears and result in expensive repairs. Debris and contaminants in the power steering system can cause the valves and other components to stick. Dry and worn out seals can lead to leaks. Foaming can lead to vibration in the system creating difficult steering and problems in the system.

- Perform a fast, simple, safe and complete service and exchange in just minutes.
- Services both the pump reservoir and remote reservoir systems.

#### Specifications

Power Cord	10' (3m)	Shipping Height	41" (104 cm)
Power Supply	12 volt DC	Shipping Width	24" (61 cm)
New Fluid Capacity	70 oz	Shipping Depth	19" (48 cm)

RECOMMENDED CHEMICALS SCK1000 Part No. 400-1045



OILCLEAN 1000



PART NO. 200-3112 STANDARD ADAPTERS (INCLUDED)



## OilClean 1000

### Engine Oil Flush System

#### Part No. 500-6050

The OilClean system removes sludge and contaminants that can build up throughout the lubrication system over time. The OilClean system uses proprietary detergents to clean and lubricate the oil galleys, valve train, oil pan, timing cover, oil pump and oil screen.

- Dynamic flushing process cleans entire lubrication system.
- Works with spin-on and canister style oil filter assemblies.

#### Specifications

Power Cord	18' (5.5m)	Shipping Height	41" (104 cm)
Power Supply	12 volt DC	Shipping Width	24" (61 cm)
New Fluid Capacity	70 oz	Shipping Depth	19" (48 cm)

PART NO.	QTY	DESCRIPTION
200-3112	1	Standard Adapter Kit
200-1030	1	Universal Banjo Adapter

RECOMMENDED CHEMICALS OC2K Part No. 200-1026



FLUID-VAC 1000



## FluidVac 1000

### General Purpose Fluid Exchange System

#### Part No. 500-9050

The FluidVac 1000 quickly extracts various types of fluid, up to 90-weight, in a vehicle's system in just a few simple steps. The FluidVac 1000 can also be used as a general purpose machine to perform a fast, easy and basic fluid exchange. The machine is easy to use and does not require detaching any lines, hoses or making time-consuming connections.

- General purpose machine can be used for multiple applications.
- Performs a simple and safe fluid evacuation or exchange in minutes.
- Air-powered pump will pull 24 inches of vacuum and handle 90 weight fluids.

#### Specifications

Hose	8' (2.43m)	Shipping Height	41" (104 cm)
Power Supply	Air Power Supply	Shipping Width	24" (61 cm)
New Fluid Capacity	26 Quart (24.6L)	Shipping Depth	19" (48 cm)

# BrakeVac II

## Premium Brake Fluid Flush System

### Part No. 500-8100

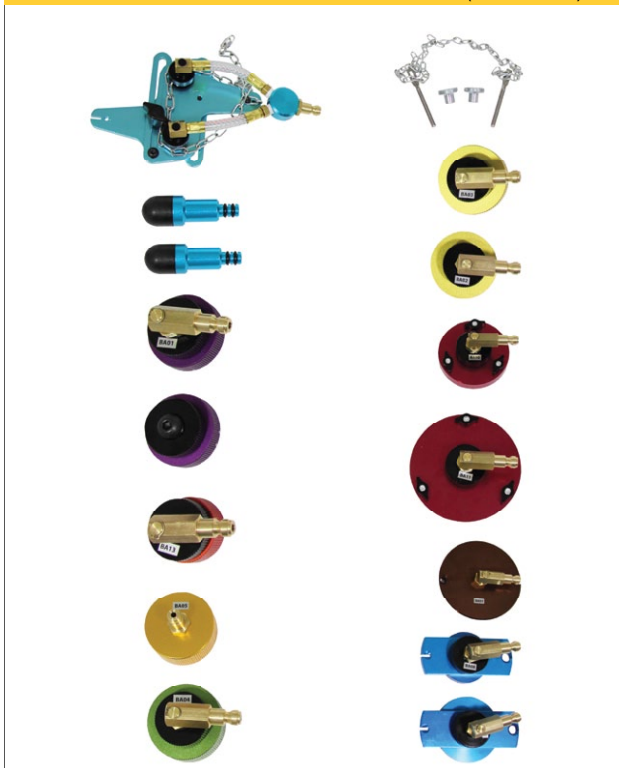
The BrakeVac II brake bleeder machine is a simple, user friendly and efficient way to flush and bleed today's high tech brake systems. The BrakeVac II reduces the concerns associated with both air pressure and vacuum style brake bleeding. This system can complete a full brake system flush in 10 minutes with only one operator thereby lowering labor costs and maximizing profits.

- Performs brake flush using pressure and vacuum simultaneously.
- Vacuum pump to easily remove fluid from brake fluid reservoir.
- Complete brake system flush in just 10 minutes.
- Pressure and vacuum assist, ensuring quick operation.
- Adjustable pressure regulator controls operating pressure.
- 1 gallon (3.78L) fluid tank & removable waste tank for multiple services.
- Drain switch to empty new fluid tank for changing to different brake fluids.
- Extra long 10 foot pressure hose with quick disconnect coupler assures full lift extension.
- Easy to view tank allows for fast visual check of fluid in the reservoir.



\* BrakeVac II unit may also be purchased without adapters.  
Part number 500-8105. OEM specific adapters are available.

### PART NO. 200-3118M STANDARD ADAPTERS (INCLUDED)



PART NO.	QTY	DESCRIPTION
066-6000	1	2-piece, 3 Tabs, Expandable O-Rings
066-6002	1	3 Tab Twist On With Expandable O-Ring BA-03
066-6003	1	3 Tab Twist On With Expandable O-Ring BA-04
066-6004	1	Threaded Screw Cap
066-6005	1	Universal Round Adapter With Chain Tension Hold Down
066-6006	1	Expandable O-Ring With Hold Down Chain 2.91" Diameter
066-6007	1	Expandable O-Ring With Hold Down Chain 2.11" - 2.17" Diameter
066-6008	1	Expandable O-Ring With Adjustable Hold Down Tabs 1.69" Diameter
066-6009	1	Expandable O-Ring With Adjustable Hold Down Tabs 2.75" Diameter
066-6010	1	Twin Cylinders With Rubber Cones Connected Together With Common Hose
066-6012	1	Twist On 2 Tab With Expandable O-Ring
066-6013	1	Twist On 2 Tab With Expandable O-Ring - Nissan Altima, Xterra

### Specifications

Power Cord	16.5' (5m)	Shipping Height	41" (104 cm)
Power Supply	12 volt DC	Shipping Width	24" (61 cm)
New Fluid Capacity	1 Gal. (3.79L)	Shipping Depth	19" (48 cm)





# CarClean System

*The Ultimate A/C Ventilation and Interior Sanitizing System*

CARCLEAN SYSTEM

The MotorVac CarClean System treats the problem of mold, mildew and bacteria in a vehicle's ventilation system and passenger cabin surfaces. The CarClean System is a safe, simple and effective profit generator that targets the health of the driver and occupants, not the vehicle. CarClean System is the perfect preventative maintenance (PM) service because it can be run on any vehicle, leased or owned that comes into your shop, regardless of year, make, model or mileage.



## **Nano Technology by Ultrasonic MiST Cleaning Solution**

MotorVac's Ultrasonic MiST Cleaning Solution features nano-droplet technology and is designed specifically for use with the MotorVac CarClean System.

## **Complete In-Car Service**

MotorVac's Ultrasonic MiST Cleaning Solution penetrates the entire ventilation system and passenger compartment surfaces to restore interior air quality.





Specifications	
Power Supply	12 volt DC
Shipping Height	13.8" (35 cm)
Shipping Width	8" (20.5 cm)
Shipping Depth	5.5" (14 cm)

### Part No. 500-0500

The MotorVac CarClean System creates nano-droplets which are drawn into the vehicle's ventilation system treating harmful mold, mildew and bacteria. CarClean treats the entire ventilation system including the evaporator, heater core, air ducts and passenger cabin surfaces. In-Car air quality is the perfect preventive maintenance service because it targets the health of the driver - not the vehicle. The PM service can be run on any vehicle, leased or owned that comes into your shop regardless of the year, make, model, mileage or condition.

- Restores in-vehicle air quality for a healthier driving environment.
- Cleans and deodorizes the entire HVAC System.
- The car's recirculation system draws the MiST through the vent system and "Fogs" the entire interior of the vehicle.
- Simple one button operation allows for easy service procedure.
- Built in low-fluid sensor alerts and protects the machine from running dry.
- Portable. Operates on 12 volt DC.

## UltraSonic MiST

Improve In-Car Air Quality



### Part No. 400-0501

Mold and mildew can thrive in the HVAC system of a vehicle. MiST Ultrasonic Cleaning Solution:

- Improves in-car air quality as it refreshes and revitalizes the air people breathe.
- Penetrates deep into the vehicle's HVAC system to eliminate mold, mildew and associated odors.

*\* A MiST service is recommended every 6 months or whenever the cabin filter is replaced.*

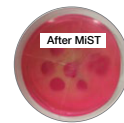
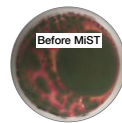
CarClean MiST Solution 12 x 3.38 fl oz (100ml)

### The Results Speak for Themselves

Below are samples that were taken from the vehicle's HVAC system before and then two days after a MotorVac CarClean Service.



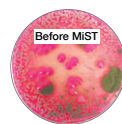
Honda Civic without cabin air filter 119,000 km / 74,000 miles



VW Jetta equipped with cabin air filter 58,000 km / 36,000 miles



Toyota Corolla without cabin air filter 198,000 km / 123,000 miles



Porsche equipped with cabin air filter 29,000 km / 18,000 miles



# Fuel Detergents MV3 / MV4

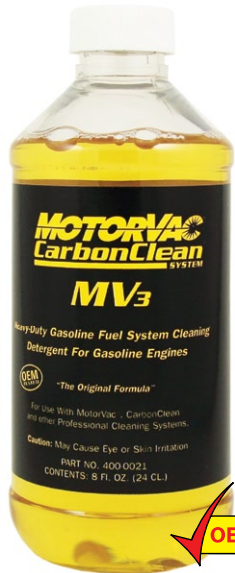
MV3 / MV3D / MV4

## Fuel Detergents MV3 / MV4

Fuel injectors, intake valves and combustion chambers are adversely effected by the build up of contaminants. These contaminants can affect drivability and fuel economy. MotorVac CarbonClean detergents loosen and dissolve the carbon, gum and varnish that build up throughout an engine's fuel system. CarbonClean detergents use a highly effective proprietary formula to restore the performance of the vehicle's fuel system without the use of harmful alcohols such as methanol and hexanol which can dry the seals in a fuel system. CarbonClean detergents will not damage the engine components and can be used with confidence.

### CarbonClean MV3 Heavy Duty Fuel System Cleaning Detergent

This proprietary detergent gently "steam cleans" internal engine components, eliminating soft carbon and other contaminants that harm engines and impede performance.



**Part No. 400-0020**  
CarbonClean MV3 Heavy Duty Gasoline Fuel System Cleaning Detergent  
12 x 8oz (236ml) Bottles



**Part No. 400-0126**  
CarbonClean MV3 Heavy Duty Gasoline Fuel System Cleaning Detergent  
4 x 32oz (946ml) Bottles

### CarbonClean MV4 Intake System Cleaning Detergent

MV4 incorporates a foaming action to decarbonize the air intake, plenum, throttle body, intake runners and intake valves and is applied using the ICS kit or the S-Tool Canister.



**Part No. 400-0030**  
CarbonClean MV4 Intake System Cleaning Detergent and Upper Engine Cleaner  
12 x 8oz (236ml) Bottles



# Fuel Detergents MV3D

## CarbonClean MV3D Industrial Diesel Tune Detergent

MotorVac MV3D detergent is designed to remove carbon from combustion chambers and injectors to safely restore horsepower, lower opacity and restore fuel mileage in diesel engines.

**Part No. 400-0010**  
CarbonClean MV3D Industrial Diesel Tune Detergent  
12 x 16oz (473ml) Bottles

# Fuel Detergents MV5 / MV6

## Fuel System Cleaning and Decarbonizing Service



MV5 / MV6

CarbonClean MV-5 and MV-6 were developed to provide technicians with our powerful CarbonClean chemistry in an easy to use, pre-mixed package. Introduced to the system through the fuel rail, MV-5 and MV-6 offer a host of benefits over the competition:

### Features and Benefits

- Contains the maximum allowable amount of detergent by law to clean carbon, gum, and varnish off injectors and valves
- Proprietary "Steam Cleaning" formulation breaks down carbon deposits in the fuel system and combustion chamber
- Exclusive HydroBond Technology™ eliminates water and improves fuel atomization for a more efficient combustion of fuel
- Where competitors' products send carbon deposits downstream, our unique aliphatic chemistry causes carbon to burn up, preventing problems associated with O2 sensors and catalytic converters

The drive away benefits of MV-5 and MV-6 include restored fuel economy, more power, less emissions, better start-up, reduced hesitation and smoother idle.

### CarbonClean MV-5 Fuel System Cleaner and Engine Decarbonizer

This product works exclusively with our CarbonClean 1000 Machine



Part No. 400-0050

CarbonClean MV-5 Fuel System Cleaner and Engine Decarbonizer  
6 x 17oz (503ml) Bottles

### CarbonClean MV-6 Fuel System Cleaner and Engine Decarbonizer

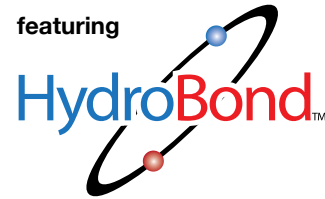
This product works with any pressurized canister type tool that introduces product through the fuel rail.



Part No. 400-0060

CarbonClean MV-6 Fuel System Cleaner and Engine Decarbonizer  
6 x 16oz (473ml) Bottles

featuring



Residue after burning





STEERCLEAN SCK 1000



**Part No. 400-1045**

SKC 1000 SteerClean 2 - Step Kit  
6 Kits - 2 x 8oz (236ml) Bottles

# SteerClean SCK1000

## SteerClean SCK1000 2 Step Kit

Power steering fluid degrades as it is exposed to heat. The power steering system can become noisy and stiff while the fluid loses lubricity potentially causing metal to metal wear. SteerClean kits improve the operation of the steering system and extends its life.

### Step 1 SteerClean Power Steering Flush Detergent

- Removes varnish and sludge deposits, to increase fluid circulation and extend component life.

### Step 2 SteerClean Power Steering Fluid Conditioner

- Protects against wear and noise.
- Helps keep the system clean after a service.
- Conditions seals to prevent potential leaks.



OILCLEAN OC2K



**Part No. 200-1026**

OC2K Oil Clean 2 Part Service Kit  
12 x 16oz (473ml) Bottles, Plus 12 Filters

**Part No. 200-1027**

Oil Clean Bulk  
4 x 1 Gallon (3.78L) Jugs, Plus 32 Filters

# OilClean OC2K

## Premium Engine Cleaning Detergent

### OilClean OC2K / OC2B 2 Part Service Kits

Some engines are susceptible to sludging. Regular oil changes aren't always enough to prevent the build up of this sludge. Servicing the engine with OilClean Engine Oil System Cleaning Detergent can eliminate sludging issues.

### OilClean Engine Oil System Cleaning Detergent

- Specially formulated to be the safest, most effective engine oil system cleaning detergent available.
- Encapsulates all of the sludge and contaminants and leaves the engine components clean.
- Cleans entire system including oil galleys, valve train, oil pan, timing cover, oil pump and oil screen.
- Kit includes detergent plus a 5 micron filter to trap and suspend any sludge or contaminants that pass through the system.



TT2K / UNIVERSAL ATF PROTECTANT



**Part No. 400-0137**

TT2K TransTech 2 Step Kit  
6 Kits - 2 x 8oz (236ml) Bottles

# TransTech TT2K

## TransTech TT2K 2 Step Kit

Over time, heat deteriorates transmission fluid. The fluid oxidizes and forms sludge and varnish that can damage transmission components. MotorVac solutions effectively clean and condition the transmission without the use of harmful alcohols that can damage seals.

### Step 1 TT1 Automatic Transmission Fluid Cleaner

- Gently loosens and removes varnish, sludge and contaminants that build up throughout the transmission system.

### Step 2 TT2 Automatic Transmission Fluid Conditioner

- Extends transmission life by keeping seals pliable to reduce the possibility of leakage.
- Reduces fluid oxidation and heat related breakdowns.



# CoolantClean CC2K

## Premium Coolant Service Solutions



**Part No. 400-0138**  
 CC2K CoolantClean 2 - Step Kit  
 6 Kits - 2 x 8oz (236ml) Bottles

### CoolantClean CC2K 2 Part Service Kits

Rust and scale can accumulate in the cooling system of a vehicle. This can impede the flow of coolant and act as an insulator, which can deter the transfer of heat. MotorVac CoolantClean solutions help ensure proper coolant flow by removing the build-up of material that can clog a vehicle's cooling system and by keeping the system free of rust and scale after a service.

#### Step 1 CC5 Radiator Flush

- Restores cooling system efficiency by removing rust, scale, and other contaminants from the cooling system.

#### Step 2 CC6 Water Pump Lubricant and Rust Preventative

- Contains rust and corrosion inhibitors which help to prevent radiator deposits that can cause clogging and overheating.



**Part No. 400-0156**  
 Radiator Fluid Test Strips  
 12 Bottles x 70 Strips

## Fluid Test Strips & Instant Test Pads

### Radiator Fluid Test Strips and One-Drop Instant Lubricant Tests

MotorVac Diagnostic Strips and Pads provide the technician with an easy way to diagnose the vehicle's fluid condition. Both of these test kits provide a visual result which can determine the condition of the fluid and be shown to the customer.

#### Radiator Fluid Test Strips

- Analyze all key antifreeze coolant factors - freeze point, pH and RA simultaneously.

#### One-Drop Instant Lubricant Tests

- Each test pad can analyze brake fluid, transmission fluid, power steering fluid and motor oil.
- Recommended for use as part of a Complimentary Fluid Evaluation Program.



**Part No. 400-0154**  
 One-Drop Instant Lubricant Test Pads  
 12 Boxes x 100 Sheets

## Universal ATF Protectant

By using MotorVac Universal ATF Protectant, a full service facility can service virtually all vehicles by stocking only synthetic Dexron III and Dexron VI. No need to stock expensive OEM fluids that tie up money and space. As well, Universal ATF Protectant increases transmission life and improves performance.



**Part No. 400-1030as**  
 Universal ATF Protectant  
 12 x 10oz (296ml) Bottles

- Eliminates the need to stock multiple ATF types.
- Prolongs transmission life by reducing excessive heat and friction.
- Ensures smoother shifting and eliminates transmission shudder.
- Conditions and restores seals and O-rings to help eliminate leaks.



OPTIONAL ADAPTERS



### OPTIONAL TRANSMISSION ADAPTERS

PART NO.	DESCRIPTION
061-0008	45 FLARE M 1/2 #8
061-0010	45 FLARE M 5/8 #10
061-1008	COUPLER - FLARE F #10 x #8
062-0140	#6-45 FLARED TUBE W/NUT
062-2000	ADAPTER - TRANS, BMW M12, MALE, O-RING
062-2005	ADAPTER - TRANS, BMW M12, FEMALE, O-RING
062-2010	ADAPTER - TRANS, BMW M10, MALE, M18NU
062-2015	ADAPTER - TRANS, BMW M10, FEMALE, O-RING
062-2061	ADAPTER VOLVO TRANS MALE - .587DI
062-2062	ADAPTER VOLVO TRANS FEMALE 593I
062-2063	ADAPTER, MALE "S" SERIES VOLVO
062-2064	ADAPTER, FEMALE "S" SERIES VOLVO
062-2065	ADAPTER, FOR SATURN INCLUDES 080-0593 / 030-3101
062-2068A	ADAPTER, DURAMAX FEMALE FOR ALL
062-2069	ADAPTER, DURAMAX MALE FOR ALL
062-2070	ADAPTER, FEMALE 2004 F350 DIESEL
062-2071	ADAPTER, MALE 2004 F350 DIESEL
062-2072	CADILLAC CTS ADAPTER
062-2073	ADAPTER, MERCEDES BENZ MALE
062-2074	ADAPTER, MERCEDES BENZ FEMALE
062-4400	ADAPTER, FORD QUICK DISCONNECT 1/2"
065-1033	ADAPTER, DRAIN HOOK FOR OIL FLUSH
080-0593	COUPLER, 1/4" MQD x 1/4" MPT
200-0062	ASSEMBLY, TRANSMISSION FLUSH TOOL
200-6100	ASSEMBLY, PRESSURE REDUCER REGULATOR
200-6101	HIGH PRESSURE ADAPTER ASSEMBLY
060-2000	ADAPTER TRANS GM 7/16" INVERTED FLARE MALE
060-2005	ADAPTER TRANS GM 7/16" INVERTED FLARE FEMALE
060-2010	ADAPTER TRANS GM 1/2" INVERTED FLARE MALE
060-2015	ADAPTER TRANS GM 1/2" INVERTED FLARE FEMALE
060-2020	ADAPTER TRANS GM 1/2" HOSE
060-2025	ADAPTER TRANS VW M12 MALE
060-2030	ADAPTER TRANS VW M12 WITH D-RING
060-2035	ADAPTER TRANS JEEP 5/8-18 MALE
060-2040	ADAPTER TRANS JEEP 5/8-18 FEMALE
060-2045	ADAPTER TRANS JEEP SAE 45 DEGREE FLARE MALE
060-2050	ADAPTER TRANS JEEP SAE 45 DEGREE FLARE FEMALE
060-2055	ADAPTER TRANS FORD SAE 45 DEGREE FLARE FEMALE
060-2060	ADAPTER TRANS FORD SAE 45 DEGREE FLARE MALE

### OPTIONAL FUEL ADAPTERS

PART NO.	DESCRIPTION
060-2300	14mm FEMALE
060-2310	ADAPTER - FEMALE INV FLR M14 X 1.5
060-2315	ADAPTER - MALE BBL FLR M14 X 1.5
060-2320	ADAPTER - FEMALE OUT FLR F14 X1.5
060-2325	ADAPTER - MALE INV FLR M14 X1.5
060-2402	BANJO 14mm
060-2600	16mm FEMALE
060-2700	UNION - M 14mm x 16mm
060-2740	BOLT - BANJO 14mm
060-2741	WASHER - 14mm
060-2742	CAP NUT - 14 mm
060-3101	ADAPTER, GAS MALE W/FLG NISSAN QUEST A/S
060-3102	ADAPTER, GAS FEMALE NISSAN QUEST A/S
060-3200	MALE QUICK DISCONNECT - 1/4
060-4800	ADAPTER, MITSUBISHI MALE
060-4805	ADAPTER, MITSUBISHI FEMALE
061-0001	FUEL SYPHON
061-0004	45 FLARE M 1/4 #4
061-0005	45 FLARE M 5/16 #5
061-0006	45 FLARE M 3/8 #6
061-0008	45 FLARE M 1/2 #8
061-0010	45 FLARE M 5/8 #10
061-0016	ADAPTER - FEMALE FLARE-#6 JIC
061-0026	ADAPTER - MALE FLARE, #6 JIC
061-0505	COUPLER - FLARE F #5 x #5
061-0604	COUPLER - FLARE F #6 x #4
061-0605	45 FLARE M #6 x #5 45
061-1008	COUPLER - FLARE F #10 x #8
061-1210	45 FLARE M #12 x #10
061-1212	COUPLER - FLARE F #12 x #12
061-3510	OPEN END - 3/16
061-5500	CONNECTOR - 1/2 NAB NY
061-5800	CONNECTOR - 5/8 NAB NY

### CARBONCLEAN 1000 OPTIONAL ADAPTERS

063-1317	ADAPTER - MALE 14MM X 1.5
063-1318	ADAPTER - FEMALE 14MM X 1.5
063-1322	ADAPTER - MALE BANJO BOLT - M10 X 1.0
063-1373	ADAPTER - MALE BANJO BOLT - M12 X 1.25
063-1374	ADAPTER - MALE BANJO BOLT - M12 X 1.5
063-1332	ADAPTER - FEMALE SWIVEL - M12 X 1.5
063-1333	ADAPTER - MALE & FEMALE SWIVEL - M14 X 1.5
063-1335	ADAPTER - MALE & FEMALE SWIVEL - M16 X 1.5
063-1339	ADAPTER - HONDA CIVIC QUICK CONNECT 6 MM - MALE
063-1375	ADAPTER - HONDA BANJO 12 MM
063-1376	ADAPTER - NISSAN 11MM MALE
063-1377	ADAPTER - HYUNDAI 15 MM MALE
063-1345	RELAY - HONDA FUEL PUMP DISABLE
063-1378	ADAPTER - HYUNDAI 16 MM MALE
063-1353	FUEL NUT- HONDA
063-1354	ADAPTER - GM S-BEND 7/16 FEMALE THREAD





## **WARRANTY STATEMENT**

Motorvac warrants its products to be free of defects in materials and workmanship for a period of one year.

### **CONDITIONS**

MotorVac, at its sole discretion, will replace or repair any defective item within the warranty period. MotorVac must be contacted in the event of a warranty claim and Motorvac, at its sole discretion, will decide if the item needs to be returned for inspection. If the item is to be returned for inspection, a Returned Goods Authorization Number (RGA) and shipping instructions will be provided. All returns must be clearly marked with the RGA number provided. Motorvac products can normally be serviced “in field” and will not require return. A replacement part can be sent from the factory for such repair.

## **TERMS AND CONDITIONS**

### **TERMS**

All orders are subject to approval as prices may change without notice. Our payment terms are Net 30 days upon approved credit. Overdue accounts are subject to a 2% monthly interest charge. Remittance payable to UView Ultraviolet Systems Inc.

### **RETURNS**

A distributor that wishes credit on new material that is in original factory packaging must first obtain a Return Goods Authorization (RGA) number from the factory. The factory will then issue instructions as to shipping. The RGA number must appear on all documents and correspondence relating to the matter. All returned product is subject to a minimum 15% restocking fee unless otherwise stated.

## **TECH SUPPORT**

**For all technical questions regarding MotorVac products and services please contact 1-800-841-8810.**



MotorVac is a proud member of the following associations:

